

USER MANUAL

Patio Keyhole Garden

A STAND-ALONE RAISED GARDEN
BED FOR 3 TO 4 PEOPLE



45¼" x 24" x 19"



mon PETIT
POTAGER

We can grow *much more*
than vegetables

CONGRATULATIONS

on buying your very own *Keyhole Garden!*

This wooden raised garden bed was invented more than 20 years ago and has been in use in African communities ever since. It provides you with a fun and straightforward introduction to the concepts of permaculture. Built using the “lasagna” technique, successive layers of green or brown vegetables are arranged like the forest floor, which encourages a true natural ecosystem to form. Our keyhole garden is simple, practical, environmentally friendly, and extremely fertile.

IT OFFERS MANY ADVANTAGES:

- A **direct connection with nature**, the nourishing earth, biodiversity, the flow of the seasons, and life itself.
- A **practical way to manage household waste**, thanks to its composter where your organic waste is transformed into nutrients that feed the naturally abundant growth of your vegetables.
- The joy of (re)discovering the **flavor, freshness**, and nutritional quality of healthy, “homegrown” produce.
- The satisfaction of **sharing the values intrinsic to kitchen gardening** and dietary wellness.



— Because this is what we live for! —

Together, we develop **innovative, sustainable** solutions to make kitchen gardening easier, more straightforward, more natural, and more **sustainable!**

WHAT'S IN — your box —

BEFORE YOU START, CHECK THAT EVERYTHING YOU
NEED CAME IN YOUR BOX:



16 slats of Douglas spruce to build your Keyhole Garden



4 perforated panels for the composter



1 geotextile membrane

K1

6
2 $\frac{2}{3}$ " x 45 $\frac{1}{4}$ "
BOARDS



K6

6
5 $\frac{1}{2}$ " x 22 $\frac{1}{4}$ "
BOARDS

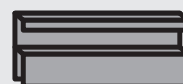


K2

2
2 $\frac{3}{4}$ " x 45 $\frac{1}{4}$ "
BOARDS



4 PROFILES



K5

2
2 $\frac{3}{4}$ " x 22 $\frac{1}{4}$ "
BOARDS



4 CAPS



IN CASE OF ANY MISSING OR
DEFECTIVE PARTS:

Contact us by email at the following address:
contact@monpetitpotager.fr

ASSEMBLING YOUR Keyhole Garden

A FEW TIPS BEFORE YOU START

Wood is a living material that continues to evolve even after it is cut. If you find any cracks, don't panic! This is completely normal: wood doesn't dry evenly, and this can sometimes result in a few cracks. These cracks have no negative effect on the robustness or durability of your product.

To protect the wood from outdoor moisture, insects, and fungus, we strongly recommend applying a natural vegetable oil-based surface or penetrating finish.

For your Keyhole Garden's permanent home, choose a spot that gets plenty of sun during the day, is sheltered from the wind and has a perfectly flat surface.

For your "off-the-ground" balcony or patio planting project, the geotextile membrane found in the box allows excess water to drain and retains the organic matter, but if you have a wooden patio or balcony, then constant contact with your Keyhole Garden may damage it. If this is the case, we recommend placing a waterproof material underneath your Keyhole Garden to protect the wooden surface (e.g., tiles placed flush against each other).

Once you have chosen the right spot, you are ready to assemble your Keyhole Garden, following the instructions in the diagram below:

STEP 1

- To assemble the base of your Keyhole Garden, place 2 **K1** boards and 2 **K6** boards on the floor with the tongues facing up, and insert the boards into the corners, always as shown in the diagram.
- Next, add the other boards and finish off with the **K5** and **K2** boards, to complete your Keyhole Garden

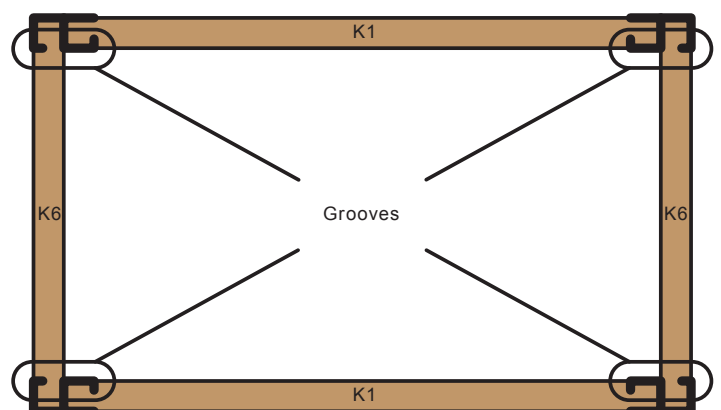
STEP 2

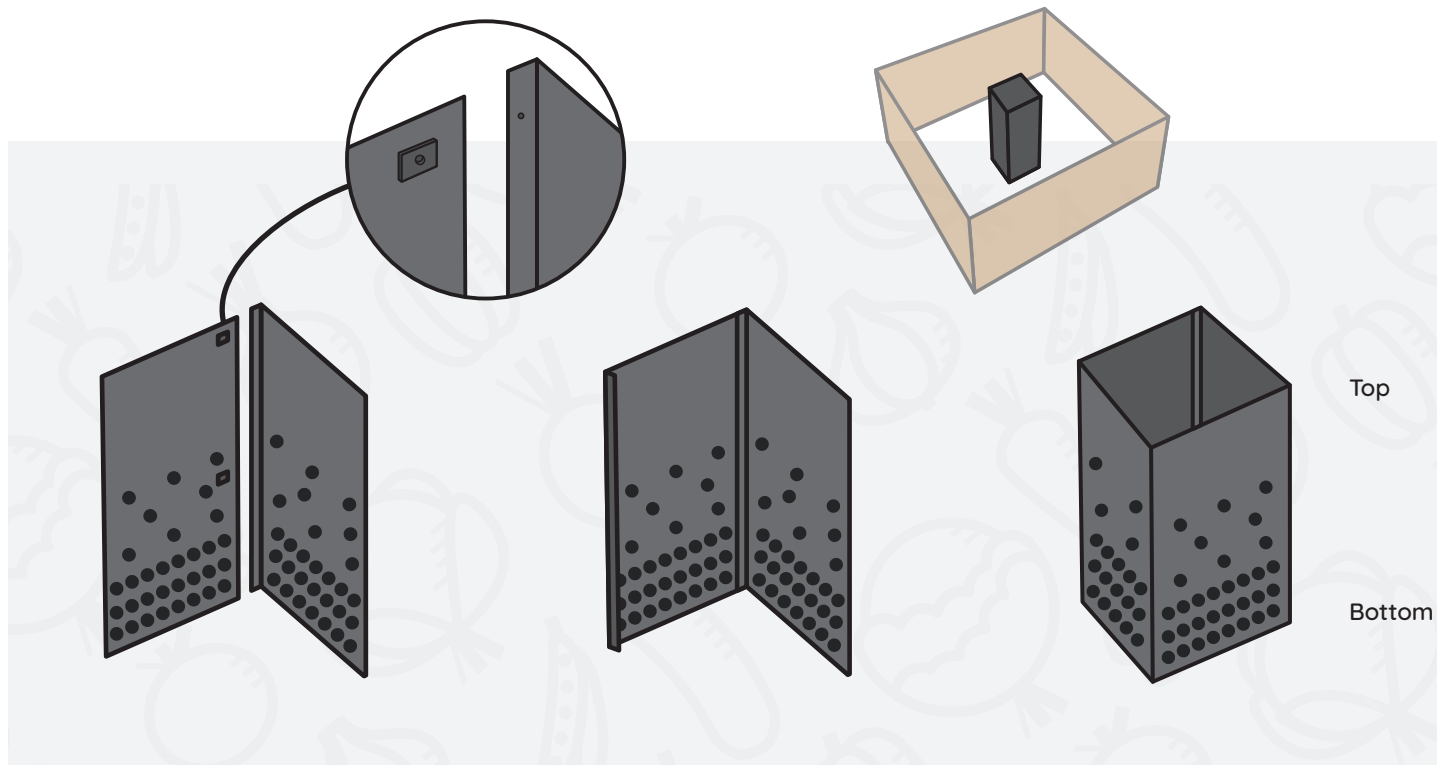
Use staples or tacks to affix the geotextile membrane to the inside edges. Lastly, place the 4 caps on each of the 4 corners.

STEP 3

Assemble your composter and position it in the middle for an optimal distribution of nutrients, or close to the edges if you want it to be easy to access.

Tongue





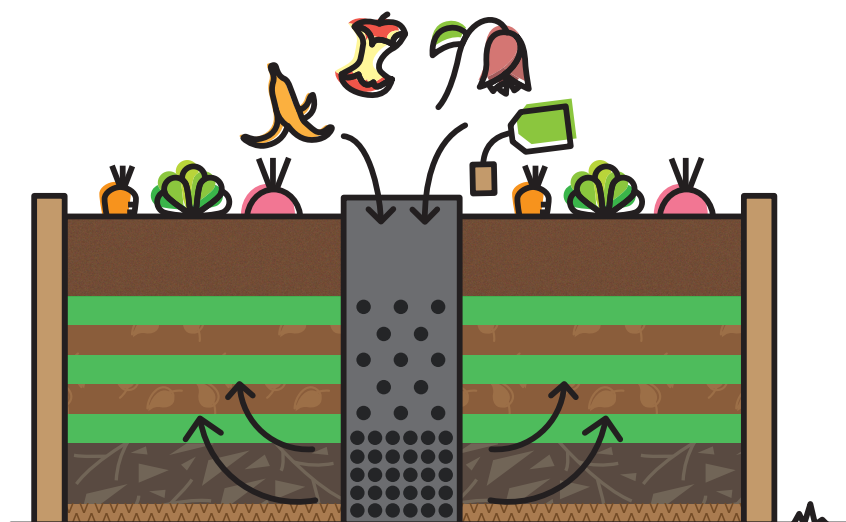
FILLING YOUR *Keyhole Garden*

To fill your Keyhole Garden, you can start with an initial layer of cardboard, which will help retain moisture, and then fill the bottom of the Keyhole Garden with pieces of wood, dead branches, and rotten logs (the fungus present in these kinds of wood plays an important role in breaking down organic matter). Next, fill the tray with successive layers, about 1.5 to 2 in. thick, of grass

clippings or green leaves (nitrogen-based matter containing chlorophyll) and dead leaves or mulch (carbon-based matter). You can **alternate these layers** until the tray is about 2/3 full, watering them abundantly or standing on them to pack it all down.

Lastly, complete filling your Keyhole Garden with a mix of garden earth

or **topsoil and compost**. This last step is more important if you don't have enough compostable materials (nitrogen and/or carbon).

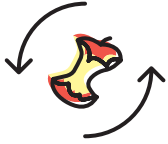


■ GREEN: NITROGEN

- Fresh grass clippings
- Green leaves
- Manure
- Algae

■ BROWN: CARBON

- Shredded paper and cardboard
- Twigs
- Dead leaves
- Sawdust
- Ash



RECYCLING

your organic waste



GREAT FOR COMPOSTING

- Pieces of fruit and vegetables
- Paper and cardboard
- Eggshells
- Tea and coffee
- Plants
- Garlic, onions, citrus fruits (in small amounts)



DO NOT COMPOST

- Meat and fish
- Fats
- Vegetable oils
- Poop!



Contrary to popular belief, home composting doesn't smell.

To obtain **good compost**, with no pests and no smell, it must be **properly balanced** and well-aired. To obtain that balance, follow the rule of opposites. The concept is to **alternate, in layers a few inches thick, nitrogen-based, moist waste** (peelings and non-meat leftovers) with carbon-based, dry waste (paper, small boxes, teabags, egg boxes, etc.), and make sure that all your waste is cut up into very small pieces to make it easier for micro-organisms (microscopic fungi and bacteria) to break it down. You can make it even more effective by adding a few spoonfuls of compost activator.



You can cover the composter with a small wooden board, but make sure that your compost doesn't dry out, because microbial life can't develop without at least a bit of moisture.

The only "hassle" is the presence of fruit flies, little insects that you sometimes find on overripe fruit. These little insects play an important role, but they can be kept at bay by adding a small layer of dry matter (ideally some sawdust).



NOW PLANT YOUR VEGETABLES, AND WATCH
THE MAGIC TAKE PLACE!

OUR RANGE OF DIFFERENT —— Keyhole Gardens ——

Small model



KEYHOLE GARDEN
47¼" x 45¼" x 19"

Large model



KEYHOLE GARDEN
69" x 67" x 19"

ANY QUESTIONS?
Don't hesitate to get in touch!



we can grow much more than vegetables

www.monpetitpotager.fr

contact@monpetitpotager.fr

A brand from:



Follow us on social media:

